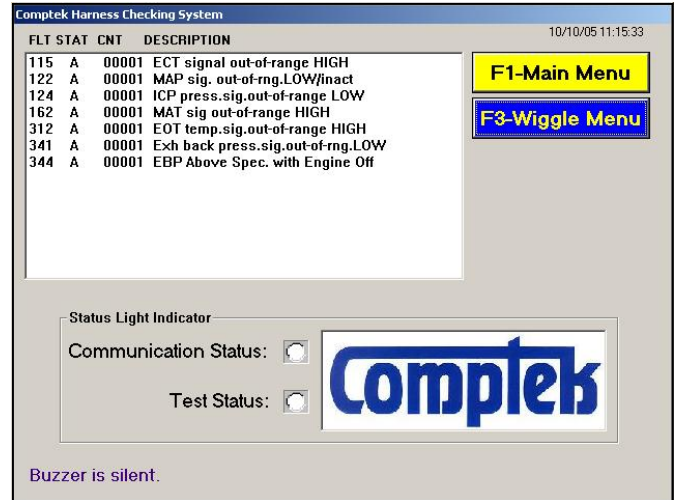
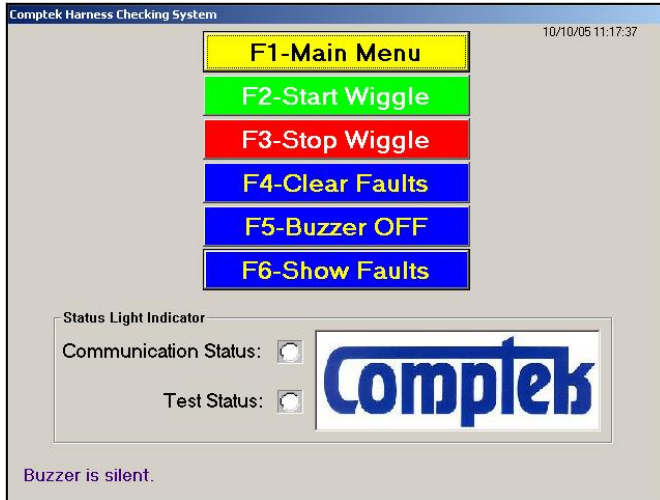




Harness Test System



Comptek's extensive experience in the engine test field has led to the development of the Harness/ECM Test System. This system can be utilized at OEMs on the final assembly line or at Tier 1 & 2 harness and cable suppliers.

Test Performed

- Continuity
- Short Circuits
- Connectivity
- ECM– Read Data and Faults *
- Issue ECM Commands *
- Run Proprietary Diagnostics *

* If ECM is connected

Comptek, Incorporated

37450 Enterprise Court
Farmington Hills, MI 48331

www.comptekinc.com

Phone: 248.477.5215

Fax: 248.477.5311

email: sales@comptekinc.com

The logo for Complex, featuring the word "Complex" in a bold, blue, sans-serif font. The letter 'C' is stylized with a thick stroke. To the left of the logo is a blue square graphic with a white triangle pointing towards the top-left corner.

Other Applications by Comptek:

- Engine Test Systems
- Generator Test Systems
- Leak Test Monitoring
- Assembly Line Monitoring
- Assembly Line Part Failsafing
- Custom Electronic Assemblies
- ECM Programming Stations

And all systems supplied with friendly service and support.



COMPTEK Incorporated has addressed the computer automation needs of the industrial marketplace since 1983. We specialize in providing products and services for computer based industrial assembly, test and control systems.

COMPTEK integrates hardware and software capabilities into a cohesive efficient computer system. We provide plant floor systems for: Production monitoring and control; functional product tests; data retention and analysis; operator and management real-time displays and reports. Our experience encompasses a wide variety of applications using various computer based custom designs.

At **COMPTEK**, we take great care in the selection and configuration of the computer and peripheral equipment. We make certain that each system is customized and properly integrated to meet or exceed your specified requirements. Full installation supervision or turnkey. Training – remote or on site. Ongoing system support and service. Electrical panel and cabinet design and build.

COMPTEK Incorporated
37450 Enterprise Court
Farmington Hills, MI 48331

Telephone: 248.477.5215
Fax: 248.477.5311
email: sales@comptekinc.com